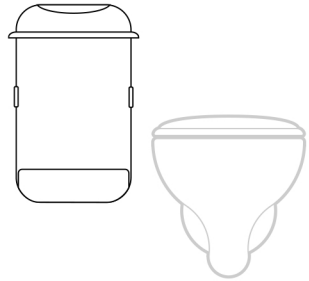
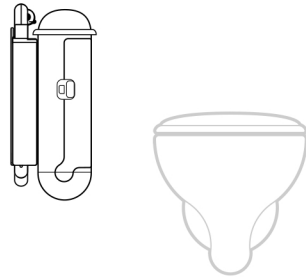


LadyPod

LadyPod™ auto

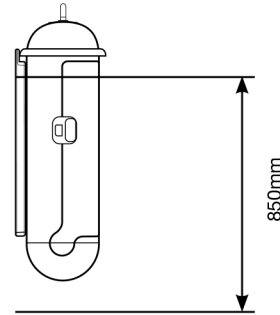


Back wall installation



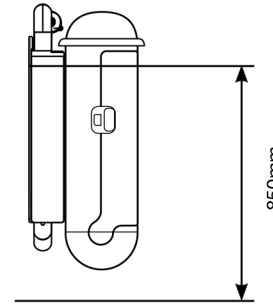
Side wall installation

Recommended specifications



850mm

Recommended specifications

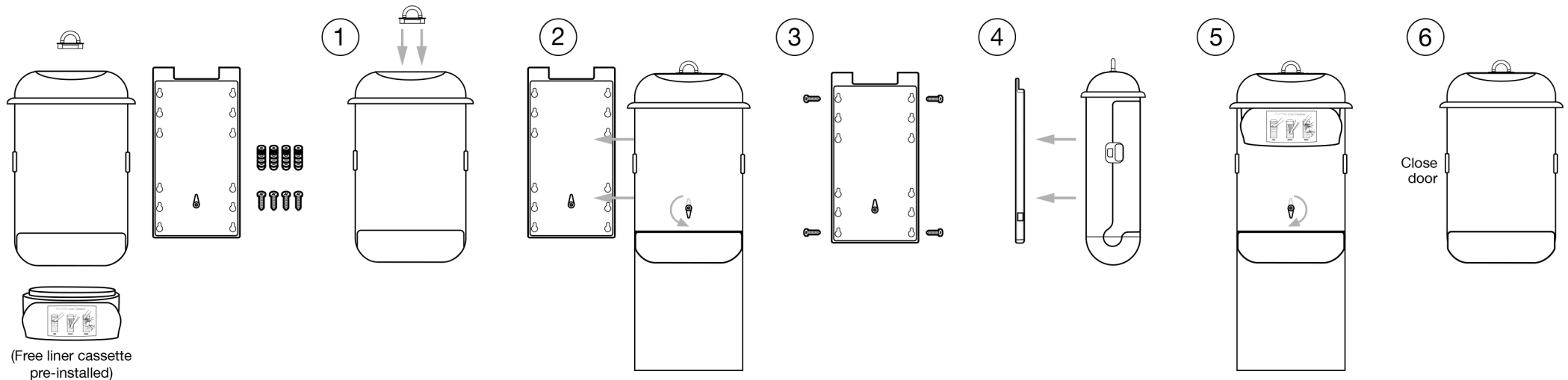


850mm

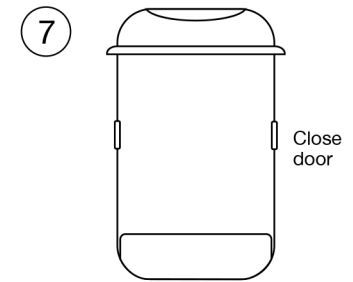
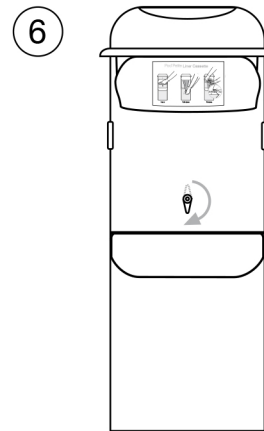
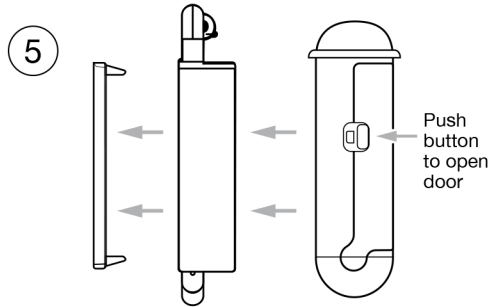
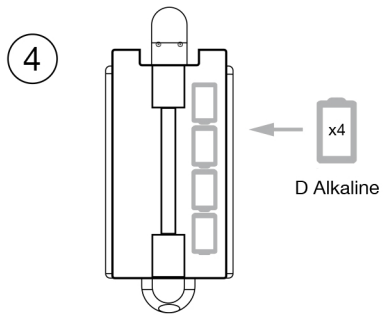
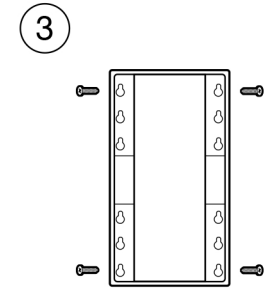
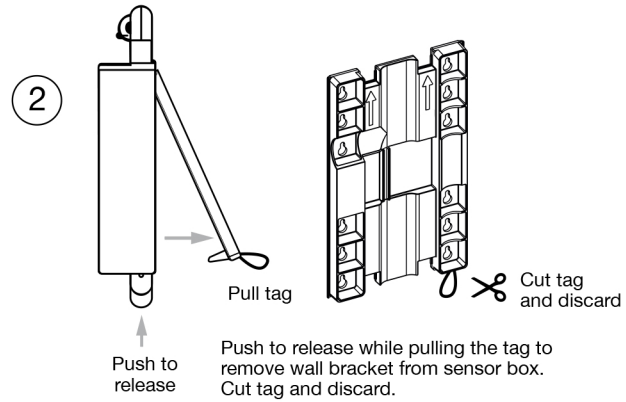
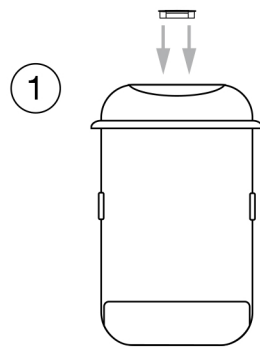
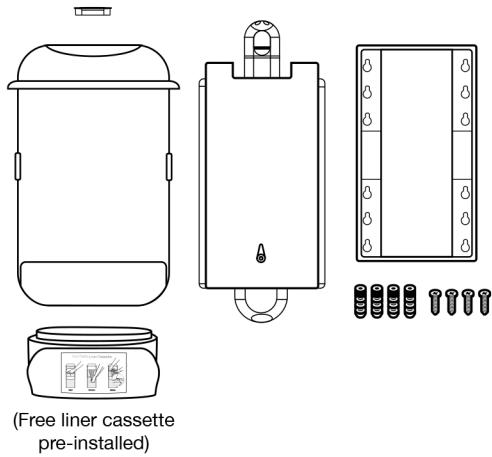
Important:

Wall bracket/sensor box wall plate should be positioned at a height of approximately 850mm above floor for best results. Secure into a wall stud. Use wall anchors if a wall stud cannot be located.

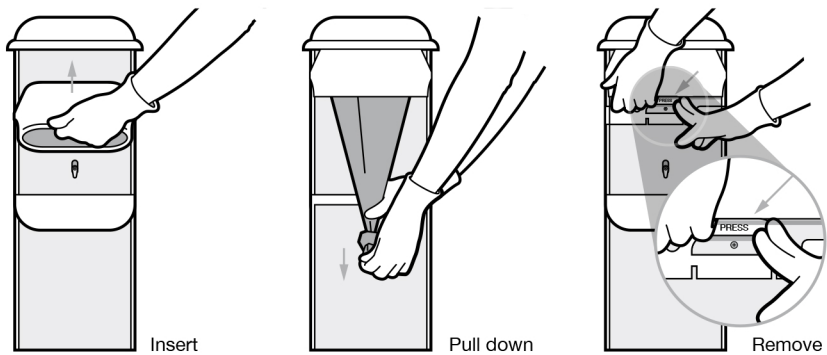
LadyPod™ MANUAL - INSTALLATION INSTRUCTIONS



LadyPod™ - AUTO - INSTALLATION INSTRUCTIONS



LadyPod™ LINER CASSETTE - INSTRUCTIONS



HYPROM

For installation videos and support visit www.hyprom.com